

Todd Bridge Road

±5 Acre Tract In Walhalla, SC



REEDY
LAND CO.

Parcel Overview

OA Todd Bridge Rd., Walhalla, SC 29691
Oconee County Tax ID: 095-00-01-072



Executive Summary

0A Todd Bridge Rd. | Walhalla, SC 29691

Property Highlights

- ±5 acres of hardwoods
- Frontage on Lay Mill & Todd Bridge Rd
- Circular drive already cut in
- ±5 minutes off Hwy 11
- Within walking distance to Oconee Station State Historic Site
- ±14 minutes to High Falls County Park on Keowee
- ±23 minutes to Seneca
- ±1 hour to Greenville

Offering Summary

Lot Size: ±5 Acres

Sale Price: \$119,900

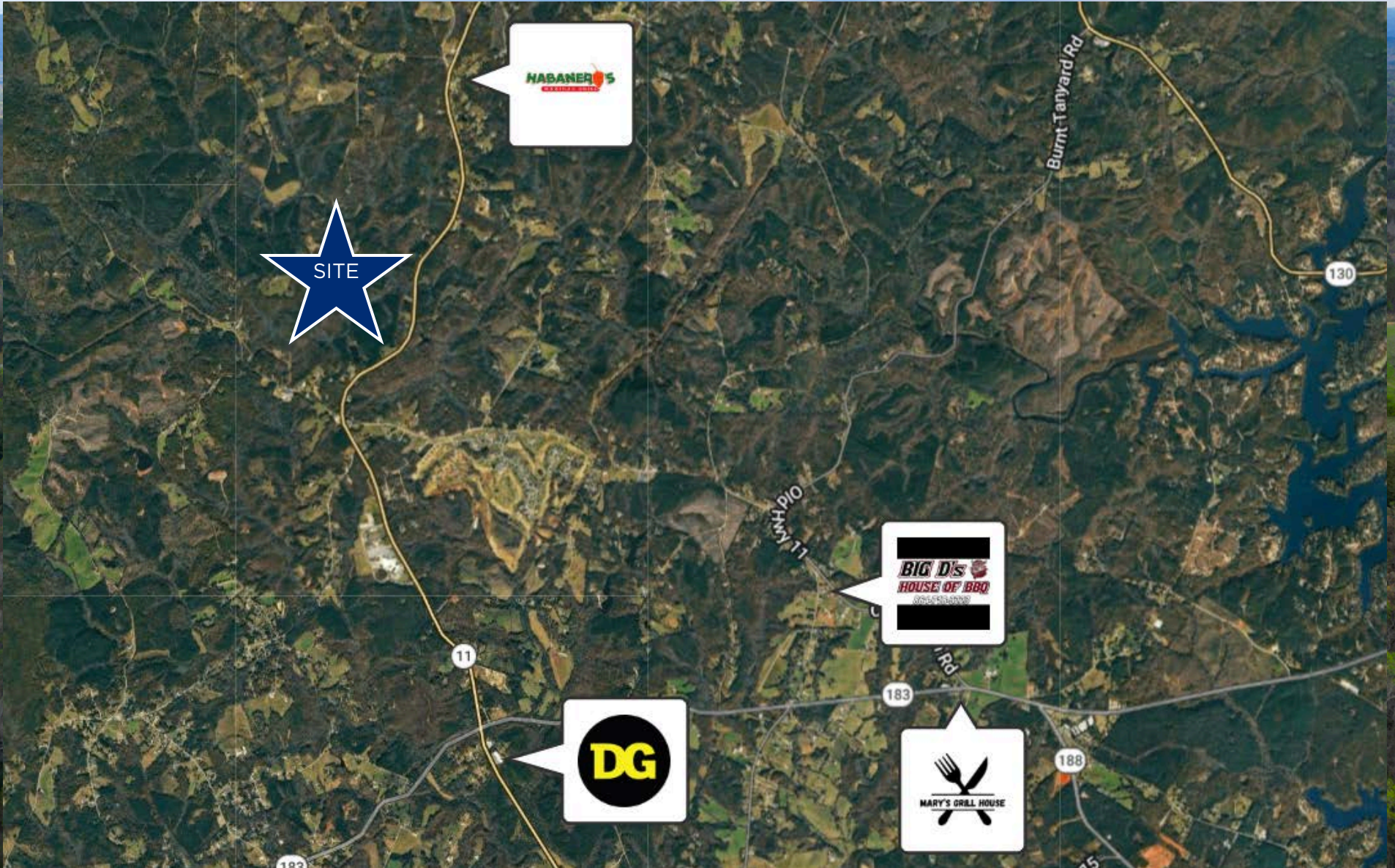
Acreage, taxes, utilities, and lot dimensions to be verified by Buyer and/or Buyer's agent



Retail Map

Walhalla, SC

REEDY



Contact Info

Reedy Land Co.

REEDY



Knox Duncan

Senior Associate

864-608-0029

kduncan@reedypg.com



Gabe Grammer

Senior Associate

803-205-3260

ggrammer@reedypg.com



Jonathan Monts

Associate

864-389-0299

jmonts@reedypg.com



Denton Warlick

Associate

864-238-7740

dwarlick@reedypg.com