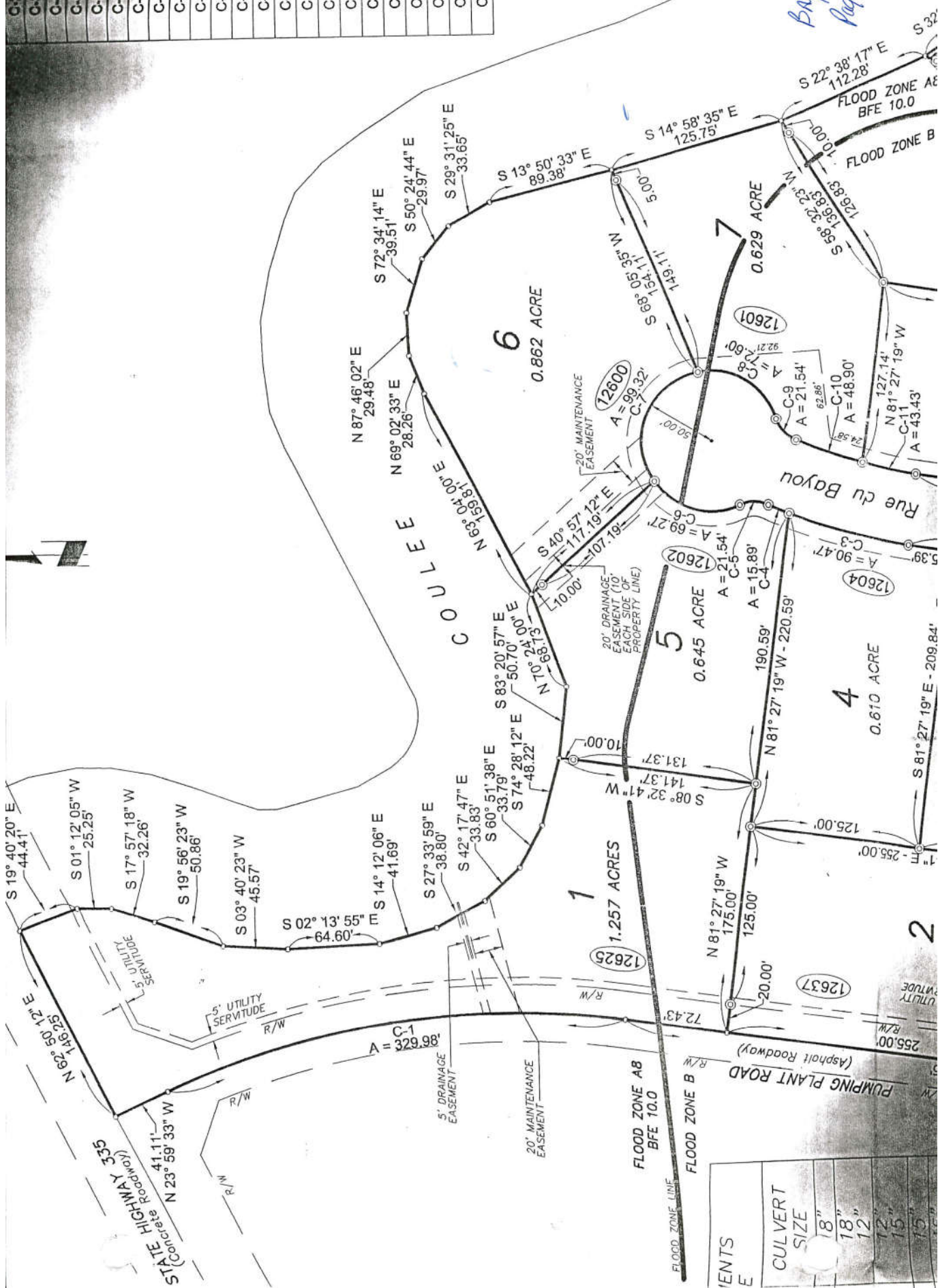


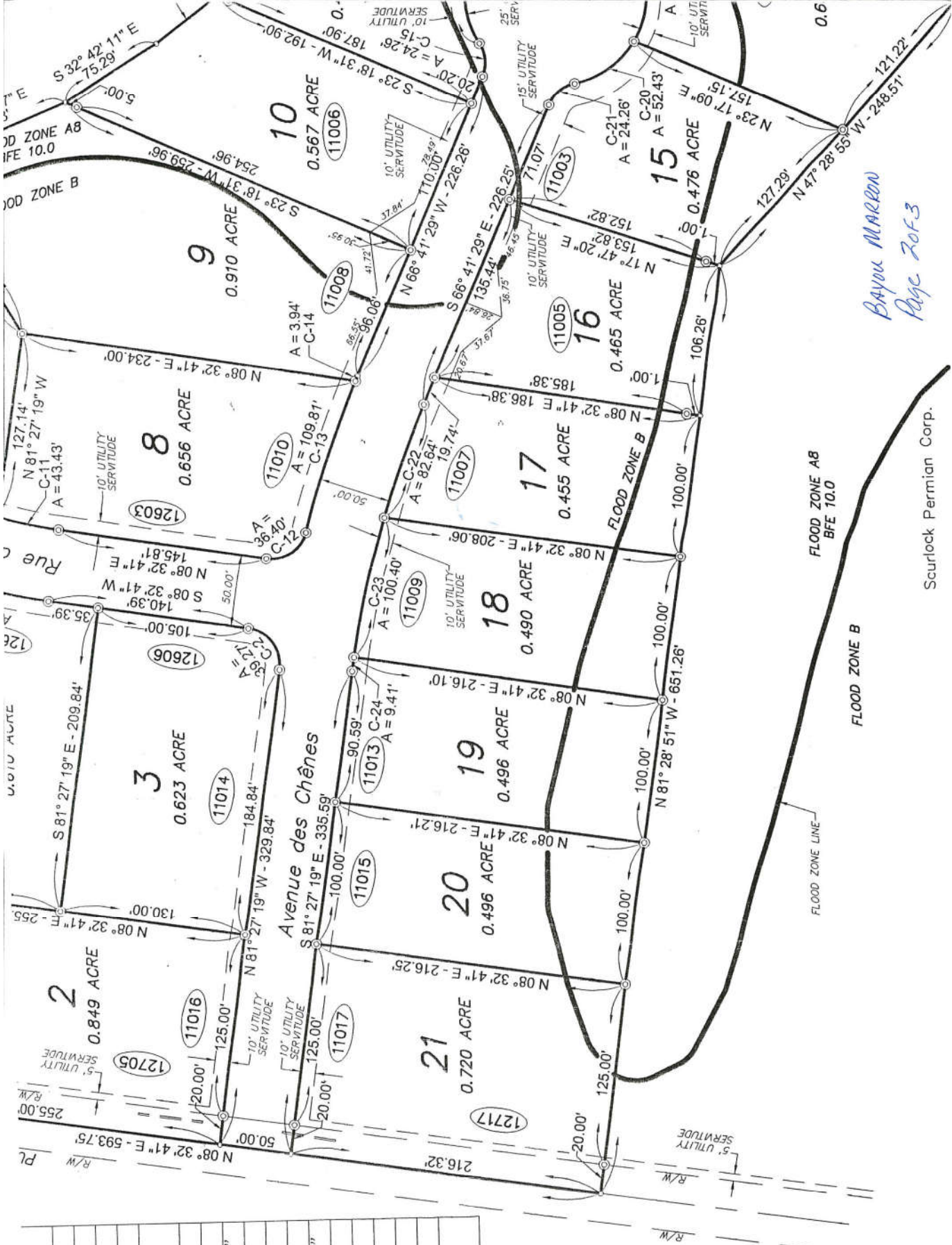
BAYOU MARCON  
Page 1 of 3

C-2	S 53° 32' 41"
C-3	S 15° 23' 03"
C-4	S 23° 25' 30"
C-5	S 01° 06' 02"
C-6	S 16° 07' 19"
C-7	N 67° 17' 10"
C-8	N 31° 13' 04"
C-9	N 48° 09' 04"
C-10	N 20° 22' 01"
C-11	N 12° 19' 39"
C-12	N 33° 09' 45"
C-13	N 70° 55' 20"
C-14	N 66° 50' 01"
C-15	S 85° 30' 32"
C-16	N 84° 46' 35"
C-17	N 20° 10' 41"
C-18	N 35° 19' 55"
C-19	S 87° 19' 11"
C-20	S 34° 44' 44"
C-21	S 38° 53' 29"
C-22	S 69° 51' 44"
C-23	S 76° 52' 56"
C-24	S 81° 05' 36"



ITEMS	CULVERT SIZE
	18"
	18"
	12"
	12"
	15"
	15"

Bayou Maren  
Page 2 of 3



Series	14"
	15"
	15"
	Swale
	15"
	15"
	15"
	15"
	15" & 18"
	12"
	12"
	12"
	12" & 18"
	18"
	15"
	15"
	12"
	12"
	12"
	12"
	12"
	18"
	NT ROAD

E. Registered  
do hereby  
performed  
standards  
Louisiana  
squirtants for  
rdal with the  
ds no. Property

*Miller*  
ider  
ional  
3367

IMPROVEMENTS:  
STREET - 20'

DRAINAGE - OF

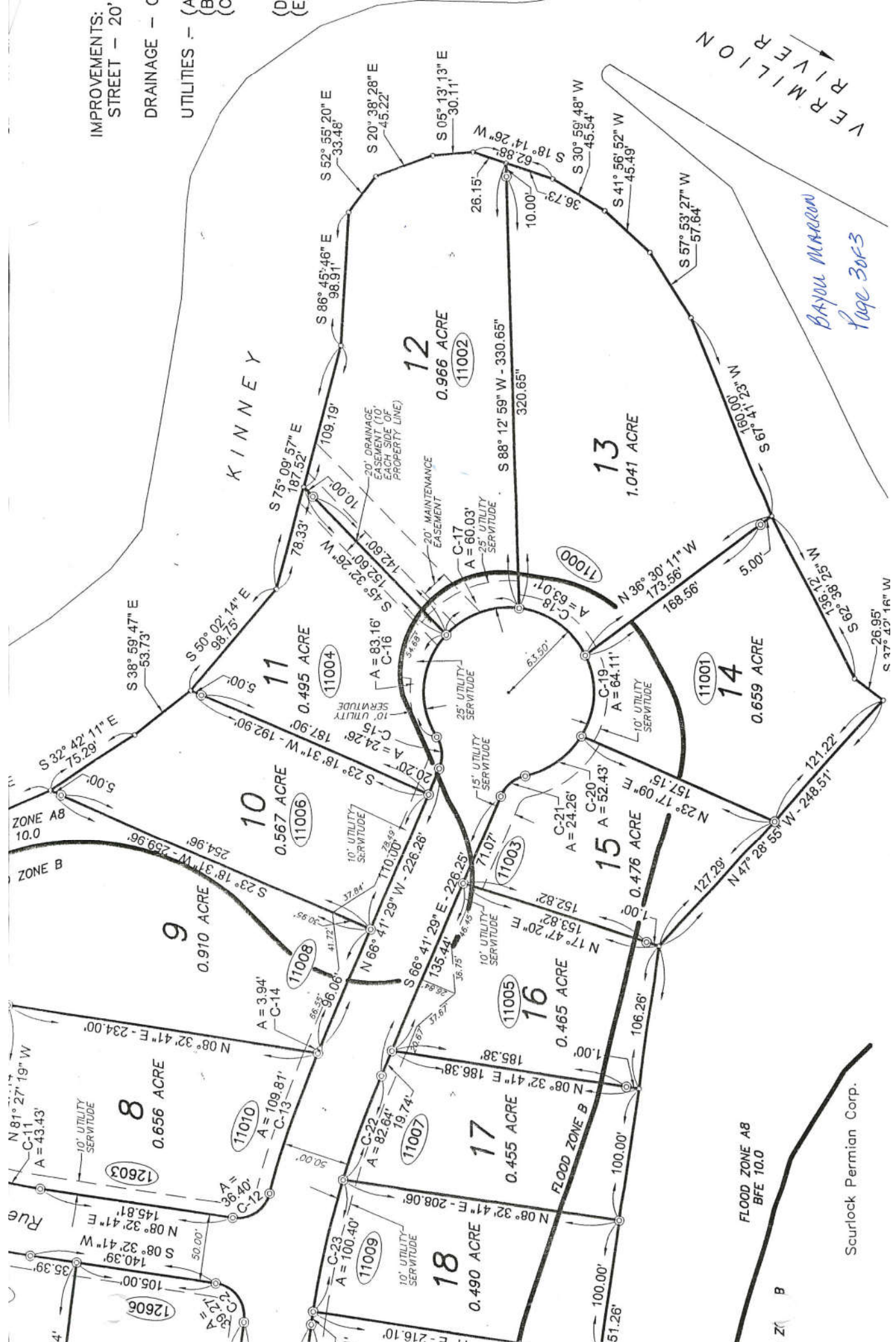
UTILITIES - (A)

(B)

(C)

(D)

(E)



*BAYOU MARRON*  
*Page 30-F3*

FLOOD ZONE A8  
BFE 10.0

Scurlock Permian Corp.

VERMILION  
RIVER